

# PROGRAM GUIDE

Spring/Summer 2022





# Table of Contents

Rentals	5
Scholarship Programs	6
Golf	8
Aquatics	10
Athletics	16
Cemetery Tours	32
Community Recreation Centers	35
Dog Parks	38
Gray's Lake (Concessions)	39
Greenhouse	40
Nature Programs	41
Special Events	51
Summer Camp	56
Volunteers	57

## Notice:

In order to comply with emergency proclamations by the Governor or Mayor, as such may be amended from time to time, and as public health guidelines evolve, for the safety of staff and the public, the Parks and Recreation Department reserves the right to cancel Facility Use permits or registrations at any time. In the event of a cancellation, the City's sole liability will be to refund the permit or registration fees. In addition, the Department reserves the right to change the Facility Use permit or registration requirements at any time. The Department will contact applicant, user, or registrants as soon as reasonably possible with such cancellation or changes.

### *Photo Release*

*Please note photos taken during programs, events or at facilities could be used for future communications, marketing and public relations efforts including social media.*



# Parks and Recreation Information

## Des Moines Parks and Recreation Office

1551 E. Martin Luther King Jr. Parkway  
Des Moines, Iowa 50317  
515-237-1386  
parks@dmgov.org

## Office Hours

Monday – Friday, 8 a.m. – 5 p.m.

Register online and find program/event information  
at [dmparks.org](http://dmparks.org)

## Cancellations

In the event that inclement weather forces events or programs to be canceled, all efforts will be made to make an announcement as soon as possible. Cancellation/Transfer/Refund Policy: Cancellations must be made at least 10 days before the event to get a refund minus \$10.00 for activities and rentals up to \$100.00 and \$30.00 for activities and rentals over \$100.00. If Parks and Recreation staff cancels the Activity or Rental, you will get a full refund.

## Text Message Notifications

Text any of the following keywords to 84483 to sign up for updates on: DSMEvents, DSMPools, DSMSports, DSMTrails, DSMPopUp, DSMVolunteers



Facebook.com/  
desmoinesparks



Instagram.com/  
desmoinesparks



Twitter.com/  
desmoinesparks



Youtube.com/  
desmoinesparks  
andrecreation

# Parks and Recreation Information

## Mayor

Frank Cownie

## City Council

**Ward I** - Indira Scheumaker

**Ward II** - Linda Westergaard

**Ward III** - Josh Mandelbaum

**Ward IV** - Joe Gatto

**At Large** - Carl Voss

**At Large** - Connie Boesen

## Parks and Recreation Board

The Parks and Recreation Board is comprised of 15 members. Each city council member appoints two members and the Des Moines Public School Board appoints one member. The board meets monthly on the fourth Tuesday in the board room at the Richard A. Clark Municipal Service Center located at 1551 E. Martin Luther King Jr. Pkwy. The board recommends rules and regulations for the equipping, maintenance, conduct, supervision and control of the city playgrounds, recreation centers and special facilities. The board also reviews and provides input for the operating and capital improvement budgets. Four advisory committees provide citizen and expert input to the board on various parks and recreation issues: Citizen Golf Advisory, Urban Conservation, Citizen Cemetery Advisory and Trails and Greenways.

Andrea Woodard (*Chair*)

George Davis

Cynde Fanter

Loyd W. Ogle

Joel Potter

Sarah Lohmeier

R. Stephen Vilmain

Sammy F. Pugh

William Thompson

Barb Bremner

James Bollard

Andrea Woodard

Brooke Avila

Brent Millis

Deb Chiodo

Maria Alonzo-Diaz



# Rentals

Planning a special event? Check out the wide variety of facilities available from Des Moines Parks and Recreation. No matter what you are planning – baby shower, class reunion, birthday party, wedding and more – you can find the right sized venue.

## Available facilities:

- Open-Air and Enclosed Shelters
- Community Recreation Center Conference Rooms
- Multi-purpose Rooms
- Gyms
- Floral Gardens
- Amphitheaters
- Gray's Lake and Green Spaces
- Christine Hensley Terrace
- Aquatic Centers, Pools and Wading Pools

With COVID-19 restrictions, not all facilities may be available to rent, or may have lower capacity limits that may affect your event.

To ensure you get the site and the date you want, make your reservation now! Review pricing and make your selection online at [dmparks.org](http://dmparks.org).



*For questions about our programs or shelter rentals, call 515-237-1386 | 5*





# Scholarship Programs

Des Moines Parks and Recreation offers two different scholarships for programming provided through the department.

The Youth Recreational Scholarship Program (YRSP) has been launched in partnership with Des Moines Public Schools and allows students enrolled in Des Moines schools and eligible for free/reduced meals to participate in swim lessons and/or youth sports for just \$5 per program.

The Greater Des Moines Recreational Activity Scholarship Program (GRASP) is a program that gives access to discounts for households within Des Moines that meet established guidelines.

Greater Des Moines Recreational Activity Scholarship Program (GRASP)	Youth Recreational Scholarship Program (YRSP)
Who can use each program	
Des Moines residents who meet the income guidelines will have access to discounts for their household with the ability to engage in a full range of events and activities.	Specifically for Des Moines Public School students. Only for access to youth sports and swim lessons.
Qualification Criteria	
Total Income - Based on number of people in the household. (Household Size - Household Income) 1 - \$33,975 2 - \$45,775 3 - \$57,575 4 - \$69,375 5 - \$81,175 6 - \$92,975 *Must be a Des Moines Resident	Active Des Moines Public Schools students enrolled in the Free and Reduced Meal Program.

<i>Eligibility Verification</i>	
<p>Verification of total income through IMPACT Community Action Partnership using approved list of documents (i.e. paycheck, taxes, etc). Call (515) 518-4770 to set up an appointment with IMPACT at one of their two locations.</p>	<p>Electronic opt-in process through Des Moines Public Schools Webpage Portal – The link to opt-in is available at <a href="https://activities.dmschools.org/youthprograms/parks-rec-scholarship-opt-in/">https://activities.dmschools.org/youthprograms/parks-rec-scholarship-opt-in/</a> and will be promoted during enrollment for each school year. Opting in can be done at any time throughout the school year through the DMPS website.</p>
<i>Registration Process</i>	
<p>Once someone receives their GRASP card from IMPACT Community Action Partnership, participants can contact the Parks and Recreation Administration Office to activate discounts for electronic registration through ACTIVE Net.</p>	<p>Once approved, participants call the Parks and Recreation Administration Office at (515) 237-1386 to register or have their account updated to allow electronic registration through ACTIVE Net.</p>
<i>Discounts/Benefits</i>	
<ul style="list-style-type: none"> <li>• \$5 - Youth Sports Registrations and Swim Lessons</li> <li>• Receive 50% off               <ul style="list-style-type: none"> <li>◦ Open-Air Shelters</li> <li>◦ Boat and Bike Rentals at Gray's Lake</li> </ul> </li> <li>• Receive 75% or more off the following:               <ul style="list-style-type: none"> <li>◦ Season Swim Passes</li> <li>◦ Community Garden Plot</li> </ul> </li> <li>• Additional discounts:               <ul style="list-style-type: none"> <li>◦ 1 free child admission with a paid adult admission to the Science Center of Iowa</li> <li>◦ 1 free child admission with a paid adult admission to the Blank Park Zoo</li> <li>◦ 1 free child admission with a paid adult admission to the Brenton Skating Plaza</li> </ul> </li> </ul>	<ul style="list-style-type: none"> <li>• \$5 - Youth Sports Registrations for grades Pre-K through 7 including:               <ul style="list-style-type: none"> <li>◦ Basketball</li> <li>◦ Flag Football</li> <li>◦ Volleyball</li> <li>◦ Soccer</li> <li>◦ Baseball/T-Ball</li> <li>◦ Kickball</li> </ul> </li> <li>• \$5 - Swim Lessons for grades Pre-K through 12.</li> </ul>



Des Moines offers three golf courses open to the public. A.H. Blank, Waveland and Bright Grandview each offer a unique golf experience. All three courses have affordable rates and are regarded as high quality and very playable for the novice to the advanced golfer.

#### Course Features, Amenities and Additional Opportunities

- Fat Joe's Pizza
- GPS systems in carts (Waveland and A.H. Blank)
- Banquet facilities (corporate outings, weddings, birthday parties, holiday events)
- Mini Golf (A.H. Blank)

#### Special Offers and Program

- Season Passes are available online Jan. 1 or at whichever course is open during the winter season.
- Junior Golf is offered at A.H. Blank Golf Course during the summer.
- Driving range passes available for A.H. Blank.
- Golf leagues offered at all three courses. Contact course for more information.

## A.H. Blank Golf Course

A.H. Blank first opened in 1971 as a nine-hole golf course and expanded to 18 holes in 1985. Only one of the original nine holes remains, but it has been improved with a beautiful pond and sand traps. Blank has some of the most unique features of any golf course in Central Iowa. The fairways are USGA approved ranging between 25 and 35 yards in width. The greens are always in excellent condition. Blank has also been adding trees to the course over time to make it a more interesting golf experience. Blank features a full practice range, miniature golf course, and pro shop with a complete line of golf equipment.



## Bright Grandview Golf Course

Bright Grandview Golf Course, built in 1902, is one of the oldest municipal courses in the country. With its age, it is unique and does not have the look of most modern courses. The layout is mostly flat, making it favorable for newer golfers. Many juniors and seniors play Bright Grandview for just this reason. Trees are the biggest hazard, but even with that it is not a difficult course. Although it is not a very long course, Bright Grandview's small to medium size greens pose a challenge to some individuals. The fairways are wide so you can take a full swing and not worry about losing your ball. The average round of 18 holes takes about three and a half hours to complete, which is significantly less than other public courses in the area.

## Waveland Golf Course

Waveland Golf Course is the oldest municipal golf course west of the Mississippi. This 18-hole course was built in 1901 and has a traditional layout. The clubhouse is a vintage 1940s red brick building that has a calming and pleasant atmosphere. The feature that sets Waveland apart from the other two Des Moines public courses is the incredible amount of slope. The entire course is built on wooded hillsides. The trees are also very mature, a given for a course of this age.



# Aquatics

## Half-Price Admission Nights

Make a splash with half-price daily admission! Discount applies Monday - Thursday from 5 p.m. - 6:30 p.m. throughout the summer.

Start Day	June 1
Monday - Thursday; June through August	
Program Times:	Time: 5 p.m. - close
Cost: Half-price admission	
Ages for Program: All Ages	Location: All Pools

## Family Days

Grab the family and jump into the pool! Enjoy Family Day at all City of Des Moines aquatic facilities. (Second Friday of the Month)

Start Day	June 10
Second Friday of each month; June 10, July 8, August 12	
Program Times: Regular hours	1 p.m. - 6:30 p.m.
Cost: \$5 per family	
Ages for Program: All Ages	Location: All Pools

## Private Rentals

Rent one of our aquatic facilities for your next event! Rentals are available to all individuals, organizations, clubs and youth groups. Reservations are arranged on a first-come, first-serve basis and depend on the availability of staff. Rates are \$175 per hour for a two hour block - rental from 7 p.m. - 9 p.m.

Start Day	June 11
Rental requests must be made online at least 10 days prior to the date of facility use. All facilities are available for private rental June 11 through August 1	
Program Times: After regular hours	7 p.m. - 9 p.m.
Registration Begins: 4/1/2022	Registration Ends: 7/21/2022
Cost: \$175 per hour	
Ages for Program: All Ages	Location: All Pools

## Springboard Diving

Learn the basics of springboard diving technique, safety and competition rules. No previous diving experience is required, but participants must be able to swim comfortably in deep water and easily swim a minimum distance of 25 yards. Registration ends Friday before each session in person, but Sunday before each session until noon online.

Start Day	June 13
Session 1: June 13 - 17 Session 2: June 20 - 24 Session 3: June 27 - July 1 Break for July 4 Session 4: July 11 - 15 Session 5: July 18 - 22 Session 6: July 25 - 29 Session 7: August 1 - 5	
Program Times:	9:30 a.m. - 10:30 a.m., 10:35 a.m. - 11:35 a.m. and 11:40 a.m. - 12:40 p.m.
Registration Begins: 4/1/2022	Registration Ends: 7/31/2022
Cost: \$30 per session	
Ages for Program: 8 and up (must be fully independent swimmer)	Location: Birdland Pool



## Swim Lessons\*

Sign-up for a swim lesson session today! Learn to swim through our American Red Cross lessons for ages 6 months through adults. A variety of sessions are offered in the morning and evening, including Baby and Me, Preschool Swim, Learn-To-Swim Levels 1-5, Adult Lessons and Private Lessons. Registration will open on April 1.

Start Day	June 13
Session 1: June 13 - 17 Session 2: June 20 - 24 Session 3: June 27 - July 1 Break for July 4 Session 4: July 11 - 15 Session 5: July 18 - 22 Session 6: July 25 - 29 Session 7: August 1 - 5	
Program Times:	Start times vary between 9 a.m. and 11:45 a.m., 6:45 p.m. and 7:40 p.m.
Registration Begins: 4/1/2022	Registration Ends: Friday before each session
Cost: \$30 for one session (five lessons)	
Ages for Program: All Ages	Location: All Pools

## Aqua Body

Total Body Aqua is a class that combines cardiovascular exercise with core, strength and stretching to give students of all fitness levels a total body workout.

Start Day	June 13
Tuesday/Thursday; June through August	
Program Times: Regular hours	12 noon - 12:45 p.m.
Cost: \$4 - Drop-in	
Ages for Program: 12 and up	Location: Ashworth Pool

\*Scholarship Eligible

12 | Register online and find program/event information at [dmparks.org](http://dmparks.org)

## Fitness Hour

Fitness Hour welcomes patrons to participate in a variety of activities including lap swim, water walking and utilization of the Aqua Bike/Treadmill. \*Lanes are limited during scheduled aqua fitness classes.

Start Day	June 13
June through August	
Program Times:	Monday - Friday 8 a.m. - 9 a.m. and 12 - 1 p.m. Saturday - Sunday 12 noon - 1 p.m.
Registration Begins: 4/1/2022	Registration Ends: 8/1/2022
Cost: \$5	
Ages for Program: 12 and up	Location: Ashworth Pool and Birdland Pool

\*Starting 8/2 Ashworth will expand the lap swim offering from 7-9 a.m.

## Mermaid Princess Pool Party

Join us for this "Royal" event. Meet and greet with princesses and mermaids throughout the aquatic center while swimming. Each paying participant will get to enjoy an ice cream sundae and make a craft to take home. Characters will depend on availability. Pre-registration is required. Each participant must be accompanied by at least one adult.

Start Day	June 25
Program Times:	7 p.m. - 8:30 p.m.
Registration Begins: 4/1/2022	Registration Ends: 6/24/2022
Cost: \$15	
Ages for Program: 0 - 12	Location: Northwest

## Fourth of July Slip N' Slide

Celebrate with us on the Fourth of July with some backyard fun. We will be creating a giant Slip N' Slide on the north hill at Nahas Aquatic Center from 1-3 p.m. Participants will need to fill out a wavier before participating. Anyone under 18 will need a parent/guardian to sign their wavier.

Start Day	July 4
Program Times:	1 p.m. - 3 p.m.
Daily Pool Admission	
Ages for Program: All Ages	Location: Nahas

## Superhero Swim Party

Join us for this "Heroic" event. Meet and greet with superheroes throughout the aquatic center while swimming. Each paying participant will get to enjoy an ice cream sundae and take-home craft. Characters will depend on availability. Pre-registration is required. Each participant must be accompanied by an adult.

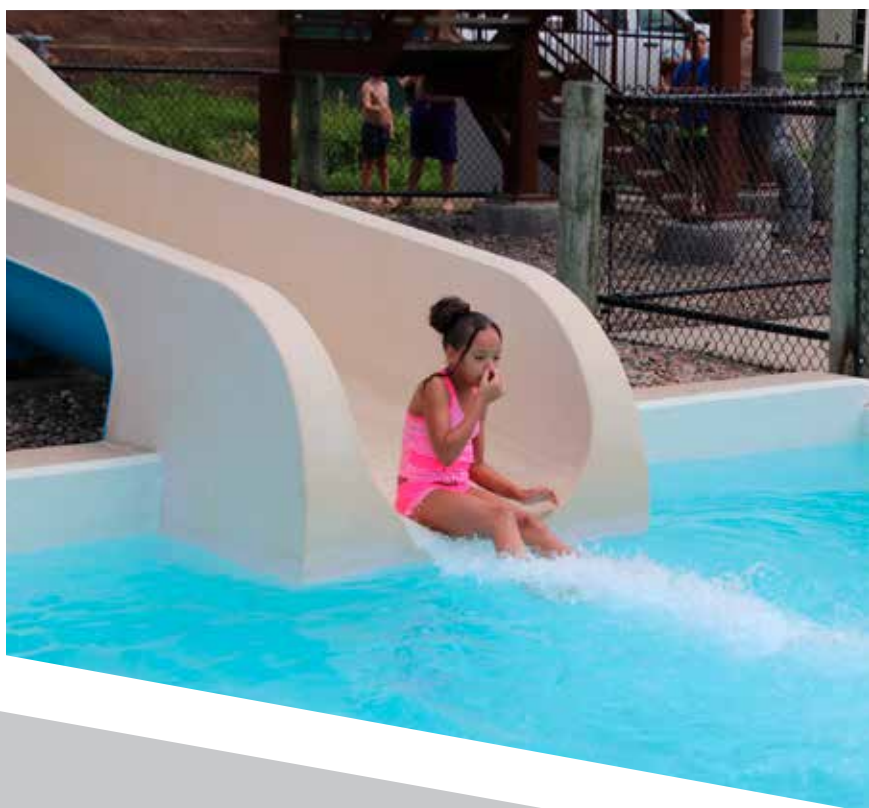
Start Day	July 23
Program Times:	6:30 p.m. - 8 p.m.
Registration Begins: 4/1/2022	Registration Ends: 7/22/2022
Cost: \$15	
Ages for Program: 0 - 12	Location: Teachout

## Lifeguard Certification Classes

We provide American Red Cross Lifeguard Certification classes. Classes take place in the spring and summer months. Upon completion the participant will be offered a seasonal summer position at one of our five aquatic facilities. If you work for Des Moines Parks for the summer the class is FREE. Class times and locations vary. Participants must be 15 years or older.

For more information, please email [aquatics@dmgov.org](mailto:aquatics@dmgov.org).





# Athletics

## Adult Spring Futsal

Futsal is five versus five soccer played on a small, hard court with a low bounce ball. League games will be played on an official Futsal court at local parks. Both coed and men's divisions will be offered. Coed requires a minimum of two women on the court at all times. The typical roster size is six to 12 players. Shin guards ARE required but NOT provided. Games will be played at Birdland Futsal Court on Tuesdays and/or Thursday nights, depending on registration numbers.

Start Day	March 31
Tuesday and/or Thursdays; March through July	
Program Times:	6 p.m. - 8 p.m.
Registration Begins: 2/1/2022	Registration Ends: 4/1/2022
Cost: \$325 per team	
Ages for Program: 18 and Up	Location: Birdland Mini-Pitch

## Adult Spring Pickleball Tournament

Join Des Moines Parks and Recreation and the Des Moines Metro Pickleball Club for our annual Spring Tournament at Waveland Tennis Courts on May 7th!

Round Robin/Single Elimination Format

Men's, Women's, and Coed Divisions available. (6 Divisions Total) Divisions will be divided by age and skill level indicated on registration form.

Start Day	May 7
Saturday, May 7; Rain Date: Saturday, May 14	
Program Times:	8 a.m. - 2 p.m.
Registration Begins: 2/1/2022	Registration Ends: 4/15/2022
Cost: \$20 per team (Only one team member will need to register for the team)	
Ages for Program: 18 and Up	Location: Waveland Tennis Courts



# Adult Summer Softball (Competitive)

Des Moines Parks and Recreation offers Adult Summer Softball leagues for coed slow-pitch teams. Start times on weeknights range from 6:15 p.m. to 9:15 p.m. Start times on Sundays range from 10 a.m. to 2 p.m. for early leagues and 2 p.m. to 7 p.m. for late leagues.

This is a competitive league that will play 13 regular-season games and has an end-of-season tournament with a one-game minimum guarantee.

Doubleheader leagues are offered but require a minimum of six teams and a maximum of eight teams. If less than six teams sign up, we will contact the manager and ask if they want to join the 14-week single-game league. If they don't, we will offer a refund. Doubleheaders will have a second session available once the first session ends.

Start Day	May 1
Monday - Friday and Sunday; May - August	
Program Times:	Monday - Friday 6:15 p.m. - 9:15 p.m.; Sunday 10 a.m. - 2 p.m. early league 2 p.m. - 7 p.m.. late league
Registration Begins: 2/1/2022	Registration Ends: 4/1/2022
Cost: \$390 per team	
Ages for Program: 18 and Up	Location: George Davis Softball Park



## Adult Summer Softball (Recreation)

Des Moines Parks and Recreation offers Adult Summer Softball leagues for coed slow-pitch teams. Start times on weeknights range from 6:15 p.m. to 9:15 p.m. Start times on Sundays range from 10 a.m. to 2 p.m. for early leagues and 2 p.m. to 7 p.m. for late leagues. This league is for recreation teams and will not have an end-of-season tournament once the 14 games have been played.

Start Day	May 1
Monday - Friday and Sunday; May - August	
Program Times:	Monday - Friday 6:15 p.m. - 9:15 p.m.; Sunday 10 a.m. - 2 p.m. early league 2 p.m. - 7 p.m.. late league
Registration Begins: 2/1/2022	Registration Ends: 4/1/2022
Cost: \$390 per team	
Ages for Program: 18 and Up	Location: George Davis Softball Park

## Adult Spring Pickleball

Pickleball is a paddleball sport that combines elements of tennis, badminton and table tennis. Participants may register as teams of two. Participants must provide their own paddle. Participants will be divided into divisions based on skill and/or age. Games will be played on Tuesdays and/or Thursdays, outdoors whenever possible, but may be moved indoors for weather considerations.

Start Day	May 3
Tuesdays and/or Thursday	
Program Times:	6 p.m. - 8 p.m.
Registration Begins: 2/1/2022	Registration Ends: 4/1/2022
Cost: \$35 per team	
Ages for Program: 18 and Up	Location: Birdland, Waveland, Jordan, Ashby, Tower, Brody, Pioneer Columbus and Fourmile Community Recreation Centers.



# Adult Summer Kickball

Des Moines Parks and Recreation offers Coed Kickball leagues for players 18 and over. A seven-game schedule is played at the George Davis Softball Park (4980 NE 46th St.) on Thursday evenings between 6:15 p.m. and 10:15 p.m.

Start Day	May 5
Thursday evenings; May through Mid - June	
Program Times:	6:15 p.m. - 10:15 p.m.,
Registration Begins: 2/1/2022	Registration Ends: 4/1/2022
Cost: \$195 per team	
Ages for Program: 18 and Up	Location: George Davis Softball Park







# Youth Tennis Clinics

We are happy to partner with Lifetime Fitness to offer Youth Tennis Clinics.

Players in the beginning levels of development will be introduced to stroke mechanics and technique. As players improve, the teaching pros will transition to stroke development and shot selection. More advanced techniques with a larger array of shots will be addressed with the focus of implementing match play strategies. We recommend that players at the upper levels of this class start to enter tournaments (USTA Level 7 or 6, UTR, and Team Challenge tournaments.)

Players will continue to refine the technical, tactical and physical foundation established in prior stages. Players will be better able to execute patterns of play, vary the spin and depth of their shots and select the correct footwork pattern to strike the ball.

All clinics take place at Waveland Tennis Courts.  
Participants must bring their own racket.

Start Day	June 5
Every week through Mid-August	
Program Times:	Varies a.m. and p.m. depending on age group.
Registration Begins: 4/1/2022	Registration Ends: 8/12/2022
Cost: \$35 for evening sessions, \$60 for morning sessions	
Ages for Program: 5 - 18	Location: Waveland Tennis Courts.

\*Scholarship Eligible

20 | Register online and find program/event information at [dmparks.org](http://dmparks.org)





## Adult Summer Fastpitch

Des Moines Parks and Recreation offers an Adult Summer Fastpitch League for men and for the first time ever, women's fast-pitch teams. Start times on weeknights range from 6:15 p.m. to 9:15 p.m.

Start Day	June 7
Tuesdays	
Program Times:	6:15 p.m. - 9:15 p.m.
Registration Begins: 2/1/2022	Registration Ends: 5/1/2022
Cost: \$390 per team	
Ages for Program: 18 and Up	Location: George Davis Softball Park

## Youth Rugby\*

Come join Des Moines Parks and Recreation for our first ever Youth Rugby League. Games and practices will be played at James W. Cownie Soccer Park (2600 Hartford Ave.). The registration fee is only \$5 per participant for those who qualify through the GRASP or YRSP scholarship program.

This program introduces children to team sports, teammates, and game situations while learning the basics of Rugby in a fun atmosphere. Each team has a parent-coach and will play against a different team once per week for six weeks. All equipment, including a personal team jersey, will be provided..

Start Day	June 14
Once per week for six weeks	
Program Times:	5:30 p.m. - 9 p.m.
Registration Begins: 4/1/2022	Registration Ends: 5/1/2022
Cost: \$50 per person	
Ages for Program: 1st Grade - 7th Grade	Location: James W. Cownie Soccer Park

\*Scholarship Eligible

*For questions about our programs or shelter rentals, call 515-237-1386 | 21*



## Adult Summer Futsal

Futsal is five versus five soccer played on a small, hard court with a low bounce ball. League games will be played on an official Futsal court at local parks. Both coed and men's divisions will be offered. Coed requires a minimum of two women on the court at all times. The typical roster size is six to 12 players. Shin guards ARE required, but NOT provided. Games will be played at Birdland Futsal Court on Tuesdays and/or Thursday nights, depending on registration numbers.

Start Day	June 14
Tuesdays and/or Thursday nights	
Program Times:	6 p.m. - 8 p.m.
Registration Begins: 4/1/2022	Registration Ends: 6/1/2022
Cost: \$325 per team	
Ages for Program: 16 and Up	Location: Birdland Mini-Pitch

## Adult Summer Bags

The Des Moines bean bag league will play Wednesdays at the Hub Spot, located at 210 Water St. at the corner of Court Ave., across from the Polk County Treasurers Office. The Hub Spot has a top-notch patio area serving concessions and adult beverages.

Teams of two adults (18 and older) compete on Wednesday nights for six weeks plus a tournament. Duos race to a score of 21 and play a set of three games. League play begins in early June. Match times range from 5:30 p.m. - 8 p.m. and will be determined after all of the teams have been finalized.

Start Day	June 15
Wednesday evenings; Early June through Mid - July	
Program Times:	5:30 p.m. - 9 p.m.
Registration Begins: 4/1/2022	Registration Ends: 6/1/2022
Cost: \$35 per team	
Ages for Program: 18 and Up	Location: Hub Spot - 215 Water St.



## Adult Summer Pickleball

Pickleball is a paddleball sport that combines elements of tennis, badminton and table tennis. Participants must register as a team of two. Participants must provide their own paddle. Participants will be divided into divisions based on skill and/or age. Games will be played on Tuesdays and/or Thursdays, outdoors whenever possible, but may be moved indoors for weather considerations.

Start Day	July 12
Tuesdays and/or Thursday	
Program Times:	6 p.m. - 8 p.m.
Registration Begins: 4/1/2022	Registration Ends: 7/1/2022
Cost: \$35 per team	
Ages for Program: 18 and Up	Location: Birdland, Waveland, Jordan, Ashby, Tower, Brody, Pioneer Columbus and Fourmile Community Recreation Centers.

## Adult Flag Football

Des Moines Parks and Recreation will offer competitive and recreation adult flag football leagues this fall. Teams will play a 7-game schedule beginning Mid-August. Teams play one game per week on either Sunday, Tuesday, or Thursday. Rosters may include up to 20 players, with seven players on the field at a time.

Start Day	Mid - August
Sunday, Tuesday, or Thursday; Mid - August through October	
Program Times:	6 p.m. - 9 p.m.
Registration Begins: 6/1/2022	Registration Ends: 8/15/2022
Cost: \$250 per team	
Ages for Program: 18 and Up	Location: James W. Cownie Soccer Park



# Adult Ultimate Frisbee

Ultimate Frisbee combines the running of soccer, the jumping, passing, and turnovers of basketball, and the deep throws into the endzone of football. Games will be Mid – August and will be played at the James W. Cownie Park. A post-season tournament will follow regular season play.

Start Day	Mid - August
Saturdays; Early September through Mid - October	
Program Times:	6 p.m. - 10 p.m.
Registration Begins: 5/1/2022	Registration Ends: 8/1/2022
Cost: \$25 per individual	
Ages for Program: 16 and Up	Location: James W. Cownie Soccer Park

# PeeWee Flag Football\*

This program introduces children to team sports, teammates and game situations while learning the basics in a fun atmosphere. Teams will be separated into age groups for 3-4- and 5–6 year olds. Each team is coed and will have a parent coach. All equipment, included a jersey, will be provided.

Start Day	Early September
Saturdays; Early September through Mid - October	
Program Times:	12 p.m. - 2 p.m.
Registration Begins: 6/1/2022	Registration Ends: 8/15/2022
Cost: \$40 per individual	
Ages for Program: 3-4 and 5-6	Location: James W. Cownie Soccer Park

\*Scholarship Eligible



# Youth Flag Football (Grades 1-7)\*

This program is offered in partnership with Des Moines Public Schools. Teams will be separated into single-grade divisions and each team will have a volunteer parent coach. Practices and games will be held at least once per week and league tournament will take place at the end of the season. All equipment, including a jersey, will be provided.

Start Day	Early September
Games: Saturdays; Early September through Mid - October Practices: Weeknights; Late August through Mid - October	
Program Times:	9 a.m. - 1 p.m. weekends; 5:45 p.m. - 8 p.m. weeknights
Registration Begins: 5/1/2022	Registration Ends: 8/1/2022
Cost: \$50 per individual; \$475 per team	
Ages for Program: Grades 1-7	Location: James W. Cownie Soccer Park



\*Scholarship Eligible

*For questions about our programs or shelter rentals, call 515-237-1386 | 25*



## Adult Fall Softball (Competitive)

Des Moines Parks and Recreation offers Adult Fall Softball leagues for coed slow-pitch teams. Start times on weeknights range from 6:15 p.m. to 9:15 p.m. Start times on Sundays range from 10 a.m. to 2 p.m. for early leagues and 2 p.m. to 7 p.m. for late leagues.

This is a competitive league that will play seven (14 if doubleheader) regular-season games.

Doubleheader leagues are offered but require a minimum of six teams and a maximum of eight teams. If less than six teams sign up, we will contact the manager and ask if they want to join the 14-week single-game league. If they don't, we will offer a refund.

Start Day	Sept. 3
Monday - Friday and Sunday; Sept.through Oct.	
Program Times:	Monday - Friday 6:15 p.m. - 9:15 p.m.; Sunday 10 a.m. - 2 p.m. early league 2 p.m. - 7 p.m.. late league
Registration Begins: 7/1/2022	Registration Ends: 8/15/2022
Cost: \$195 for single games, \$390 for doubleheader per team.	
Ages for Program: 18 and Up	Location: George Davis Softball Park





# Adult Fall Softball (Recreation)

Des Moines Parks and Recreation offers Adult Fall Softball leagues for coed and men’s slow-pitch teams. This league is for recreation teams. Start times on weeknights range from 6:15 p.m. to 9:15 p.m. Start times on Sundays range from 10 a.m. to 2 p.m. for early leagues and 2 p.m. to 7 p.m. for late leagues.

This league is for recreation teams that will play seven (14 if doubleheader) regular-season games.

Start Day	Sept. 3
Monday - Friday and Sunday; Sept. through Oct.	
Program Times:	Monday - Friday 6:15 p.m. - 9:15 p.m.; Sunday 10 a.m. - 2 p.m. early league 2 p.m. - 7 p.m.. late league
Registration Begins: 7/1/2022	Registration Ends: 8/15/2022
Cost: \$195 for single games, \$390 for doubleheader per team.	
Ages for Program: 18 and Up	Location: George Davis Softball Park





# Adult Fall Pickleball

Pickleball is a paddleball sport that combines elements of tennis, badminton and table tennis. Participants must register as a team of two. Participants must provide their own paddle. Participants will be divided into divisions based on skill and/or age. Games will be played on Tuesdays and/or Thursdays, outdoors whenever possible, but may be moved indoors for weather considerations.

Start Day	Sept. 6
Tuesdays and/or Thursday	
Program Times:	6 p.m. - 8 p.m.
Registration Begins: 6/1/2022	Registration Ends: 8/15/2022
Cost: \$35 per team	
Ages for Program: 18 and Up	Location: Birdland, Waveland, Jordan, Ashby, Tower, Brody, Pioneer Columbus and Fourmile Community Recreation Centers.

# Adult Fall Futsal

Futsal is five versus five soccer played on a small, hard court with a low bounce ball. League games will be played on an official Futsal court at local parks. Both coed and men’s divisions will be offered. Coed requires a minimum of two females on the court at all times. The typical roster size is six to 12 players. Shin guards ARE required but NOT provided. Games will be played at Birdland Futsal Court on Tuesdays and/or Thursday nights, depending on registration numbers.

Start Day	Sept. 6
Tuesdays and/or Thursday nights	
Program Times:	6 p.m. - 8 p.m.
Registration Begins: 7/1/2022	Registration Ends: 8/15/2022
Cost: \$225 per team	
Ages for Program: 18 and Up	Location: Birdland Mini-Pitch



## Adult Fall Kickball

Des Moines Parks and Recreation offers Coed Kickball leagues for players 18 and over. A seven-game schedule is played at the George Davis Softball Park (4980 NE 46th St.) on Thursday evenings between 6:15 p.m. and 9 p.m.

Start Day	Sept. 8
Wednesday evenings; Early September through Mid - October	
Program Times:	6 p.m. - 9 p.m.
Registration Begins: 7/1/2022	Registration Ends: 8/15/2022
Cost: \$195 per team	
Ages for Program: 18 and Up	Location: George Davis Softball Park

## Adult Fall Bags

The Des Moines bean bag league will play Wednesdays at the Hub Spot, located at 210 Water St. at the corner of Court Ave., across from the Polk County Treasurers Office. The Hub Spot has a top-notch patio area serving concessions and adult beverages.

Teams of two adults (18 and older) compete on Wednesday nights for six weeks plus a tournament. Duos race to a score of 21 and play a set of three games. League play begins in early June. Match times range from 5:30 p.m. - 8 p.m. and will be determined after all of the teams have been finalized.

Start Day	Sept. 14
Wednesday evenings; September through Mid October	
Program Times:	5:30 p.m. - 9 p.m.
Registration Begins: 7/1/2022	Registration Ends: 8/15/2022
Cost: \$35 per team	
Ages for Program: 18 and Up	Location: Hub Spot - 215 Water St.



## Adult Fall Pickleball Tournament

Join Des Moines Parks and Recreation and the Des Moines Metro Pickleball Club for our annual Fall Tournament at Waveland Tennis Courts on Oct. 1!

Round Robin/Single Elimination Format

Men's, Women's, and Coed Divisions available. (6 Divisions Total) Divisions will be divided by age and skill level indicated on registration form as long as numbers allow.

Start Day	Oct. 1
Saturday, Oct. 1 ; Rain Date: Sunday, Oct. 2	
Program Times:	8 a.m. - 2 p.m.
Registration Begins: 7/1/2022	Registration Ends: 9/15/2022
Cost: \$20 per team (Only one team member will need to register for the team)	
Ages for Program: 18 and Up	Location: Waveland Tennis Courts

## Youth Basketball (Grades 1-7)\*

Des Moines Parks and Recreation and Des Moines Public Schools are partnering to offer youth basketball. Separate leagues are available for boys and girls with divisions for grades 1-7. Leagues play either Saturday or Sunday beginning in November and ending with a tournament. Practices and games are played at area schools and community recreation centers.

Start Day	Early November
November - February	
Program Times:	8 a.m. - 5 p.m.
Registration Begins: 8/1/2022	Registration Ends: 10/1/2022
Cost: \$60 per individual; \$550 per team	
Ages for Program: Grades 1-7	Location: Fourmile and Pioneer Columbus Community Recreation Centers

\*Scholarship Eligible

**30** | Register online and find program/event information at [dmparks.org](http://dmparks.org)





# Cemetery Tours 2022

Des Moines Municipal Cemeteries offers three types of tours and reservations are required. Tour participants must be able to walk up to 1.5 miles on uneven ground throughout the cemetery grounds. The tours range approximately two hours in length. Tour size is limited to 35 participants and ideal for anyone above 12 years of age. The outdoor tours are both historically accurate and entertaining. Most importantly, proceeds from our tours support the preservation of our municipal cemeteries. The cost is \$10 per person, per tour. There is a group rate of \$7.50 per person for reservations with 10 or more people. Tour participants will have to follow safety precautions to keep everyone safe and healthy. Confirmation messages will include requirements and safety precautions. For more information, call 515-248-6320. Register online for any tour at [dmparks.org](http://dmparks.org)

## Civil War History Tour

On this Civil War-themed tour of Woodland Cemetery, guests will learn the history of Iowa's involvement in the Civil War by listening to the first-hand accounts of a few of the men who served and are now buried in Woodland Cemetery. The twelve stops on the tour will highlight stories from Wilson's Creek, Shiloh, Vicksburg, Sherman's March, as well as other engagements, including the experiences of United States Colored Troops now interred at the cemetery. The stories from the men buried at Woodland are supplemented by historic photographs and Civil War relics, bringing their story to life more than a century after their death. Jeff Kluever, Cemetery Historian will lead the 1.5-mile, two-hour walking tour and reservations are required.

Saturday, April 30 1 p.m. - 3 p.m.

Saturday, June 4 10 a.m. - Noon

Saturday, July 16 10 a.m. - Noon

Saturday, Aug. 13 10 a.m. - Noon

Start Day	April 30
April - August	
Program Times:	See details above
Registration Begins: 3/1/2022	Registration Ends: 8/12/2022
Cost: \$10 per person	
Ages for Program: 12 and older	Location: Woodland Cemetery 2019 Woodland Ave.



## Glendale Cemetery Historical Tour

Glendale Cemetery is one of the largest and most active cemeteries in our state. When the cemetery first opened, it was so far west of the population center it was believed it would never be used. Your tour includes a visit to the Glendale Abbey, the GAR section, Former Vice President Henry A. Wallace's burial site and many other notable residents. Participants also learn about what makes the cemetery unique culturally, how the cemetery operates today, headstone designs, cremations burials, volunteer opportunities and monument cleaning. Your tour guide is Ganesh Ganpat, Cemetery Manager.

Thursday, May 5 2 p.m. - 4 p.m.

Friday, May 6 6 p.m. - 8 p.m.

Saturday, June 18 9 a.m. - 11 a.m.

Sunday, July 17 10 a.m. - Noon

Start Day	May 5
May - July	
Program Times:	See details above
Registration Begins: 3/1/2022	Registration Ends: 7/16/2022
Cost: \$10 per person	
Ages for Program: 12 and older	Location: Glendale Cemetery 4909 University Ave.



## Woodland Cemetery Historical Tour

Woodland Cemetery is a vast treasury of our heritage and the many pioneers' leaders who are buried there transformed our country. Cemetery historian/researcher/educator Archie Cook shares his wealth of knowledge about Woodland Cemetery during a 2 ½ hour walking tour. The stories told by the monuments and headstones combine to form the history of the city as it has passed through civil and world wars, epidemics, and natural disasters as well as the normal course of birth, life, and death. Passing through the narrow drives of the cemetery, you see stone etchings of the names of many citizens from our past who helped build Des Moines. The names are a part of everyday life in our city's landscape, street, parks, schools, and building like Savery, Kenworthy, Ingersoll, Hubbell, Kaplan, Perkins, Teachout, Fleur, Redhead, Polk, and Sherman.

Saturday, April 23 1 p.m. - 3:30 p.m.

Saturday, May 21 1 p.m. - 3:30 p.m.

Saturday, June 11 9 a.m. - 11:30 a.m.

Saturday, July 23 9 a.m. - 11:30 a.m.

Saturday, Aug. 27 9 a.m. - 11:30 a.m.

Saturday, Sept. 24 1 p.m. - 3:30 p.m.

Saturday, Oct. 8 1 p.m. - 3:30 p.m.

Start Day	April 23
April - October	
Program Times:	See details above
Registration Begins: 3/1/2022	Registration Ends: 10/7/2022
Cost: \$10 per person	
Ages for Program: 12 and older	Location: Woodland Cemetery 2019 Woodland Ave.



# Community Recreation Centers

## Pioneer Columbus

2100 SE 5th St.  
248-6316

## Fourmile

3711 Easton Blvd.  
248-6315

Monday - Friday  
8 a.m. - 8 p.m.  
Youth (10 - 17) Free  
Under 10 must be accompanied  
by an adult  
Adult (18 - 59) \$1/day or \$12/month  
Senior (60 +) Free  
Yearly memberships are available

## Open Recreation

Open recreation for participants ages 10-99. Cost for adults (19-59) \$1/day or \$12/month. Youth and Seniors are Free. Basketball, volleyball, game tables, weights, cardio and public computers available Monday-Friday from 8 a.m.-8 p.m.

Start Day	January 1
Monday - Friday; January - December	
Program Times:	8 a.m. - 8 p.m.
Cost: Youth (10 - 17) Free Under 10 must be accompanied by an Adult (18 - 59) \$1/day or \$12/month Senior (60+) Free Yearly memberships are available	
Ages for Program: Any Age	Location: Pioneer Columbus Community Recreation Center

## Table Tennis

Everyone is welcome at the Des Moines Table Tennis Club (DMTTC). We offer excitement for all ages and levels of play. DMTTC is a great place to enjoy table tennis action, have fun and meet people. No pre-registration is required. Your first visit is free. If you decide to become a member, the fee is \$140 for 6 months, or \$240 for 12 months.

Start Day	April 1
Tuesdays and Thursdays; January - December	
Program Times:	5:30 p.m. - 7:30 p.m.
Cost: 18 and under - \$2 per visit; 19 and over \$5 per visit	
Ages for Program: 15 and older	Location: Fourmile Community Recreation Center

## Morning Pickleball

Get your pickleball fix year-round! Drop by Pioneer Columbus or Fourmile Recreation Center, check-in with the front desk and pay a fee of \$2 to play. All skills and ages are welcome (under 18 must be accompanied by an adult). Both centers have balls and paddles available, but you are welcome to bring your own.

Start Day	April 1
Monday - Friday; January - December	
Program Times:	8 a.m. - Noon
Cost: \$2 per day or \$15 per month	
Ages for Program: 10 and older	Location: Fourmile and Pioneer Columbus Community Recreation Centers





STREET  
collective

DMPD  
BIKE  
Camp

When: July 11-15, 2022

8:00AM - 4:00PM

Each day will begin and end at Pioneer Columbus Community Center  
2100 SE 5th Street, Des Moines, IA 50315

Ages: 11-15

At the time of the camp

Cost: FREE!

Pre-Registration Required

Contact: Deb VanVelzen

515-237-1391

dmpdyouth@dmgov.org

Enjoy a chance to learn:

Bike maintenance

Rules of the road

Utilizing gears

Bike safety

Requirements:

\*Have a bike with gears

\*Have bike riding skills

\*Wear proper athletic attire (no sandals)

\*Transportation to/from camp

\*Good physical health & positive behavior

## Bike Camp

This FREE one-week camp will allow for youth, ages 11-15, to explore Des Moines and beyond all while on their bikes! Due to the length of some of the daily rides, some bike riding experience is required. Space limited to 15 riders. Sign up at [dmpdyouth@dmgov.org](mailto:dmpdyouth@dmgov.org) or contact Deb VanVelzen at 515-237-1391.

Start Day	July 11
July 11-15	
Program Times:	8 a.m. - 4 p.m.
Registration Begins: 3/1/2022	Registration Ends: 10/7/2022
Cost: Free	
Ages for Program: 11 - 15	Location: Pioneer Columbus Community Recreation Center

# Dog Parks

There are three dog parks in Des Moines – Ewing, Reno Memorial and Riverwalk. Permits are required for entry and the annual cost is \$20. The permits can be used at all three parks and are good January 1 – December 31.

**Ewing Dog Park:** 4660 Indianola Ave.

**Reno Memorial Dog Park:** 3325 Hubbell Ave.

**Riverwalk Dog Park:** 1111 Illinois St.

**Hours:** Open year-round, daily, 6 a.m. to 10 p.m.

## Requirements

- Current dog license from the City of Des Moines or home jurisdiction
- Current dog rabies vaccination certification
- Dog must be at least four months old
- Permits and tags pertain to specific dogs, not the dog park and therefore cannot be transferred to other dogs or dog owners.

## How to purchase a permit

Buy your permit at the City Clerk's office in Des Moines City Hall (400 Robert D Ray Drive), Monday - Friday 8 a.m. – 5 p.m. or online anytime at [dmparks.org](http://dmparks.org)

Start Day	January 1
January 1 – December 31	
Program Times: Daily	6 a.m. - 10 p.m.
Cost: \$20 Annual fee	
Ages for Program: Children under the age of 10 are not allowed within the facility and those ages 10 to 15 must be accompanied by a person age 18 or older	Location: Details listed above

## Become a Dog Park Ambassador

Join our team of outgoing dog lovers and help welcome dogs and owners to the park. Dog Park Ambassadors make sure dogs and owners have an outstanding experience by educating users about the park, making sure visitors have the proper permit, and that everyone is complying with the rules. Volunteers donating 40 hours or more per year earn a free dog park permit!

To sign up visit: <https://bit.ly/DogParkAmbassador>





# Gray's Lake Park

## Gray's Lake Terrace Concession Stand

Concession stand serving cold drinks, ice cream and snack food. Watercrafts are available for rent.

Start Day	May 1
Daily May 1 - Labor Day	
Program Times:	May 1 - May 26 4 p.m. - 8 p.m. weekdays 10 a.m. - 8 p.m. weekends May 27 - July 31 10 a.m. - 8 p.m. daily August 1 - Labor Day 1 p.m. - 8 p.m. weekdays 10 a.m. - 8 p.m. weekends
Cost: food varies, sailboats \$25/half hour, other water craft \$8/half hour, \$15/hour	
Ages for Program: All ages	Location: Grays Lake Christine Hensley Terrace - 2101 Fleur Drive

## Gray's Lake Beach Concession Stand

Concession stand serving hotdogs, ice cream, cold drinks and snacks. Stand up paddle boards are available for rent, and life vests can be checked out free of charge.

Start Day	May 28
Daily, May 28 - Monday, Sept. 5	
Program Times:	May 27 - July 31 10 a.m. - 8 p.m. daily August 1 - Labor Day 1 p.m. - 8 p.m. weekdays 10 a.m. - 8 p.m. weekends
Cost: food varies. Stand up paddleboards rental cost is \$8/half hour, \$15 /hour	
Ages for Program: All ages	Location: Gray's Lake Beach Concession - 2101 Fleur Drive

# Greenhouse

## Neighborhood Flower Pick up

Neighborhood Associations who have ordered flowers, have designated pick up time.

Start Day	May 13
May 13th and 14th	
Program Times:	8 a.m. - 3 p.m.
Cost: Free	
Ages for Program: All ages	Location: Des Moines City Greenhouse

## Spring Perennial Divide

Residents are encouraged to donate perennials to the City greenhouse, which will be used in Parks, neighborhoods, schools and non-profits.

Start Day	May 14
Every Tuesday in May	
Program Times:	8 a.m. - 1 p.m.
Cost: Free	
Ages for Program: All ages	Location: Des Moines City Greenhouse



# Nature Programs

## Birding Basics

This program is free and open to all ages. Participants take a casual walk at Gray's Lake in search of migrating and residential birds. John Bissel leads the group, pointing out birds, talking about their habits and answering questions. Great for beginners and people with some experience. Wednesdays, March - May, 11-11:45 am. We will meet at the Christine Hensley Terrace for the first half of the season then move to the southeast parking lot to meet for the second half.

Start Day	March 2
Wednesdays March 2 through May 25	
Program Times:	11 a.m. - 11:45 a.m.
Cost: Free	
Ages for Program: All ages	Location: Gray's Lake Park

## GPS Egg Hunt

Registration required. Space Limited.

Join Des Moines Parks and Recreation Environmental Education on April 10 in Ewing Park for some traditional egg hunt fun with a modern, fun twist. At this event, each registered participant will use a handheld GPS unit to find the location of prizes hidden in the park. After a brief introduction and some directions on how to use the GPS, participants will go out on a GPS Egg Hunt in the park. For each correct location found, they will learn something about the park and get to pick up a small prize to take home with them. More than one person may walk along on the search, but only the registered participants are allowed to pick up the prizes. Register for either a 12:30 p.m. or 2:30 p.m. start time. For more information contact Joel at (515) 681-2027.

Start Day	April 10
Sunday, April 10	
Program Times:	12:30 p.m. and 2:30 p.m. start times
Registration Begins: 3/1/2022	Registration Ends: 4/9/2022
Cost: \$10 per team person	
Ages for Program: All ages	Location: Ewing Park Lilac Garden

A photograph of bluebird nesting boxes hanging from a tree branch, with green leaves and a pink flower visible in the background.

## Bluebird Box Monitoring

Join our Environmental Education Staff each Tuesday during the month of May as they walk through Greenwood Park to monitor the Bluebird Boxes located there. We will open the nesting boxes to check for nests, eggs and baby bluebirds. We will meet in the Rose Garden at 10:30 a.m. then start walking. Anyone may join along for any or all of the dates, just show up.

Start Day	May 3
Every Tuesday in May	
Program Times:	10:30 a.m. - Noon
Cost: Free	
Ages for Program: All ages	Location: Clare and Miles Mills Rose Garden, Greenwood Park

## Plant.Grow.Fly. Butterfly Garden

Des Moines Parks and Recreation is helping Monarch butterflies and pollinators in our city parks and you can help too. On Saturday, May 7 from 10 a.m. to noon, Parks and Recreation will host a Plant.Grow.Fly. event at Pete Crivaro Park. Sign up to be part of the program and not only will you help create the new Butterfly Garden, but you will make a butterfly friendly planter to take home with you on the same day. The first part of the program will involve learning about what pollinators need so they can survive and why they are important to people. Second, participants will decorate and fill a flower pot they design themselves. The planters will help support pollinators and participants will take it home with them. The last part of the program will be planting native Iowa species of plants in a new Butterfly Garden. Be prepared to get your hands dirty and do a little work to help out Monarchs and pollinators. Registration for this event is limited and the fee is \$10 per take-home planter created.

Start Day	May 7
Saturday, May 7	
Program Times:	10 a.m. - Noon
Registration Begins: 3/1/2022	Registration Ends: 5/6/2022
Cost: \$10 per person	
Ages for Program: All ages	Location: Pete Crivaro Park



# Milkweed for Monarchs

In an effort to increase habitat for Monarch Butterflies, Des Moines Parks and Recreation is planting several species of milkweeds in some of our parks. This time we are adding milkweed plants to the James W. Cownie Baseball Park. We are going to need some help putting the plants into the ground and getting them watered so they will survive. Participants will listen to a short informative presentation about Monarch Butterflies, receive instructions on how to handle the milkweed plants and then we will get our hands dirty putting about 300 plants in the ground.

Start Day	May 20
Program Times:	1 p.m. - 3 p.m.
Registration Begins: 3/1/2022	Registration Ends: 5/20/2022
Cost: Free	
Ages for Program: Adult	Location: James W. Cownie Baseball Park

# Milkweed for Monarchs

In an effort to increase habitat for Monarch Butterflies, Des Moines Parks and Recreation is planting several species of milkweeds in some of our parks. This time we are adding milkweed plants to the Ewing Park Prairie and we are going to need some help putting the plants into the ground and getting them watered so they will survive. Participants will listen to a short, informative presentation about Monarch Butterflies, receive instructions on how to handle the milkweed plants and then we will get our hands dirty.

Start Day	May 21
Program Times:	10 a.m. - Noon
Registration Begins: 3/1/2022	Registration Ends: 5/21/2022
Cost: Free	
Ages for Program: Adult	Location: Ewing Park Prairie



# Free Fishing Friday

This year, June 3-5 is Free Fishing Weekend in Iowa. Join us on Friday evening at Gray’s Lake Park and give fishing a try! We will supply bait, tackle and experienced instructors will be on hand to help you catch that “big one.” A fishing license is not required for participation. This event is free and open to the public.

Start Day	June 3
Program Times:	5 p.m.- 8 p.m.
Cost: Free	
Ages for Program: All Ages	Location: Gray’s Lake Park Peninsula

# Carp Fest

Des Moines Parks and Recreation is partnering with the Des Moines Izaak Walton League and the Iowa DNR to bring you Carp Fest. This free carp fishing tournament begins at 8 a.m. with registration and fishing taking place from 9 a.m. - 11:30 a.m. There will be a prize for the longest carp caught in both adult and children’s categories. Bait and fishing gear will be provided for anyone who needs it. No fishing license required for participation. Carp caught may be kept by the fisherman or donated onsite to the wildlife rehabilitation organization S.O.A.R.

Start Day	June 4
Program Times:	8 a.m. - 11:30 a.m.
Registration Begins: 6/4/2022	Registration Ends: 6/4/2022
Cost: Free	
Ages for Program: All Ages	Location: Gray’s Lake Park Peninsula





## Stand Up Paddleboard Introduction Class

This program is designed to introduce participants to stand up paddleboarding in a flat water setting. We will cover launching, board control and different paddling strokes used when on the water. Registration fee includes equipment and instruction. Pre-registration is required and gear is limited.

Start Day	June 5
June 5 (1 p.m.) July 9 (9 a.m.) July 26 (5:30 p.m.) August 9 (5:30 p.m.)	
Program Times:	Times Vary by Date: See Above
Registration Begins: 3/1/2022	Registration Ends: 8/8/2022
Cost: \$25	
Ages for Program: Anyone under 16 years old must have an adult present to participate.	Location: Gray's Lake Park Peninsula

## Backyard Birds at the Library

Meet us at the Library and we will discover some of the birds that live there and in your own backyard. There will be a story followed by bird-based activities including using binoculars on a short hike to find some live wild birds. To finish the event, participants will make a Pop Bottle Birdfeeder to take home and put up in their own yard. Please register at the appropriate library.

Start Day	June 7
June 7th East Side Library 3:30 p.m. - 4:30 p.m. June 15th South Side Library 2:30 p.m. - 3:30 p.m. June 16th Forest Avenue Library 11:00 a.m. - Noon North Side 3:30 p.m. - 4:30 p.m.	
Program Times:	Times Vary by Date: See Above
Registration Begins: 3/1/2022	Registration Ends: 6/16/2022
Cost: Free	
Ages for Program: 5 -12 years old	Locations: See Above

## Stand Up Paddleboard with the Naturalist

Join our Environmental Educator to explore and learn about the wildlife that lives in and around Gray's Lake Park from a stand up paddleboard. Registration Fee is \$15 and includes all the stand up paddleboard gear. Gear is limited and registration is required.

Start Day	June 9
June 9 June 14 June 30 July 12 July 28 August 10 August 30	
Program Times:	5:30 p.m.
Registration Begins: 3/1/2022	Registration Ends: 8/30/2022
Cost: \$15	
Ages for Program: Anyone under 16 years old must have an adult present to participate.	Location: Gray's Lake Park Peninsula

## iEARTH Camps Grade 2 - 3

iEARTH is a partnership between the Science Center of Iowa and Des Moines Parks and Recreation. Learn about ecology, hiking and the natural world from outdoor enthusiasts, art teachers and environmental specialists alike. Activities will usually take place outdoors, so be sure to dress for all kinds of weather! You will need to register through the Science Center of Iowa.

Start Day	June 20
June 20 - 24 July 18 - 22	
Program Times:	9 a.m. - 4 p.m.
Register through the Science Center of Iowa Registration Begins: 3/1/2022   Registration Ends: 6/16/2022	
Cost: Contact Science Center of Iowa for details	
Ages for Program: Grade 2 - 3	Location: MacRae Park



## iEARTH Camps Grade 4 - 5

iEARTH is a partnership between the Science Center of Iowa and Des Moines Parks and Recreation. Learn about ecology, hiking and the natural world from outdoor enthusiasts, art teachers and environmental specialists alike. Activities will usually take place outdoors, so be sure to dress for all kinds of weather! You will need to register through the Science Center of Iowa.

Start Day	June 13
June 13 - 17 June 27 - July 1	
Program Times:	9 a.m. - 4 p.m.
Register through the Science Center of Iowa Registration Begins: 3/1/2022   Registration Ends: 6/13/2022	
Cost: Contact Science Center of Iowa for details	
Ages for Program: Grade 4 - 5	Location: MacRae Park

## iEARTH Camps Grade 6 - 8

iEARTH is a partnership between the Science Center of Iowa and Des Moines Parks and Recreation. Learn about ecology, hiking and the natural world from outdoor enthusiasts, art teachers and environmental specialists alike. Time spent canoeing and biking are a big part of this camp. You will need to register through the Science Center of Iowa.

Start Day	July 11
July 11 - 15 August 1 - 5	
Program Times:	9 a.m. - 4 p.m.
Register through the Science Center of Iowa Registration Begins: 3/1/2022   Registration Ends: 7/11/2022	
Cost: Contact Science Center of Iowa for details	
Ages for Program: Grade 6 - 8	Location: Gray's Lake Park



## Art in Nature with Julia

Join 2018 Iowa Artist Fellow Julia Franklin for an exploration of Greenwood Park. Participants will wander, wonder and collect found nature materials from around the park, which will then be turned into paintbrushes. Everyone will leave with a one-of-a-kind, mixed media work that will be preserved in a glass jar. All materials will be provided. Please register in advance.

Start Day	June 11
Program Times:	10 a.m.
Registration Begins: 3/1/2022	Registration Ends: 6/10/2022
Free	
All ages program. Good for teens and adults	Location: Greenwood Park

## Buggin' Out Greenwood Park

Don't be afraid of the critters crawling around. Take a closer look and see what makes them incredible creatures. In July, we will explore Greenwood Park looking for the insects that call the park home. We will look for bugs in the yard the first week and in the pond the second week. We will supply nets and any other necessary supplies.

Start Day	July 6
July 6 July 13	
Program Times:	1 p.m.
Cost: Free	
Ages for Program: 5 - 12 years old	Location: Greenwood Park Open Shelter

## Paddle and Pick Up

This event combines canoeing on Gray's Lake with cleaning up trash at the park. We will start with a basic canoe lesson for beginners, then spend some time paddling the Gray's Lake shoreline collecting trash and making our park clean and beautiful. Participants under the age of 16 must be accompanied by an adult. Canoe space is limited, so pre-registration is required.

Start Day	July 30
Program Times:	10 a.m. - Noon
Registration Begins: 3/1/2022	Registration Ends: 7/29/2022
Cost: Free Event	
Ages for Program: Anyone under 16 years old must have an adult present to participate.	Location: Gray's Lake Peninsula





## 2-Day Canoe School for Skill Introduction

About 1/3 classroom , and 2/3 on-water instructions will focus on skills, hazard and river feature identification, teaching to different learning styles and risk management. The first day will include flat water paddling and the second day we will move to the river.

Start Day	Aug. 6
August 6-7	
Program Times:	10 a.m. – 4 p.m.
Registration Begins: 3/1/2022	Registration Ends:8/5/2022
Cost: \$50	
Ages for Program: Adult	Location: Gray's Lake Park and River TBA

## Star Party

For more than 2,000 years, the Perseid meteor shower has been the most active meteor shower of the year, and this Star Party will be held during one of the peak nights for viewing meteors! We will meet at the Ewing Park Lilac Arboretum at 6 p.m. for crafts, experiments and other activities. While the sun is setting, we will have guest speakers talk about the night sky and the interesting things you can see there as well as an outdoor movie screening. While this event is free and open to the public, we are also offering overnight primitive camping for \$25, which is available by reservation.

Start Day	Aug. 13
Program Times:	6 p.m. - Midnight
Cost: Free or \$25 for Overnight Camping	
Ages for Program: All ages	Location: Ewing Park Lilac Arboretum



# Special Events

## Mayor's Annual Ride

Ride Lake to Lake and help maintain our trails! Register for the 2022 Mayor's Annual Ride on Saturday, April 30 and your contribution will help fund new trail projects. The route will have views of Gray's Lake, Easter Lake and everything in between. Register by March 1 to guarantee a T-shirt in your size!

Start Day	April 30
Saturday, April 30	
Program Times:	Ride starts at 10 a.m.
Registration Begins: 2/1/2022	Registration Ends: 4/30/2022
Cost: \$35 per person (18+) \$5 per youth (5 - 17); no t-shirt included Free for children 4 & under	
Ages for Program: All ages	Location: Start/Finish will be Principal Park - Loop Gray's Lake to Easter Lake

### MAR - post-event

Confluence Brewing Company  
12 p.m. – 2 p.m.  
Free drink ticket for participants





## Des Moines Parks Egg-cellent Adventure

Des Moines Parks and Recreation is sending you on an Egg-cellent Adventure! The Easter Bunny visited eight of our parks and left an egg at each of those locations. This is a socially distant event that you can do on your own. We will provide eight clues that will lead you to find a special egg image in select parks. Match the egg color to each park to win!

The clues and a printable worksheet will be posted on Facebook and on the Des Moines Parks and Recreation website on Friday, April 15. You can start prepping your adventure that day, as the eggs will be hidden on Saturday, April 16 and Sunday, April 17. Turn in your worksheet to the Parks and Recreation office during the week of April 18 to receive your prize! You can also share your eggs-perience by tagging Des Moines Parks and Recreation in your photos on Facebook, Instagram or Twitter!

Start Day	April 16
April 16 - 17	
Program Times:	6 a.m. - 10 p.m.
Cost: Free	
Ages for Program: All ages	Location: Various park locations in Des Moines





## 31 Miles + Beyond Your Way

It is easy to participate and we are willing to bet you'll love how easy it is to accomplish. We invite you to complete 31 miles (+ beyond) your way in 31 days! You can choose to participate in a 50K (31 miles), 100K (62 miles), or 150K (93 miles). All you have to do is register, complete the miles your way and track it! You can walk, run, bike, swim, stroll, sprint or crawl your way to victory. Register for the specific distance.

Start Day	May 1
May 1 through May 31	
Program Times:	All day (24 hours)
Registration Begins: 3/1/2022	Registration Ends: 5/31/2022
Cost: \$10 per person	
Ages for Program: Ages 5 & up	Location: Fitness activities can be done in your neighborhood, on the trails, at the gym, in the pool, etc.

## End of School Year Bash

Bring the whole family out to celebrate the end of the school year! Enjoy live animals from the Blank Park Zoo, compete on our inflatable obstacle course, enjoy a live magician, get your face painted, meet members of the Des Moines Police Department, say hi to the K-9 unit dog, tour a fire truck with the Des Moines Fire Department, test your sports skills and play laser tag. When you run out of fuel, grab a snack and a drink to get ready for more action!

Start Day	May 21
Saturday, May 21	
Program Times:	3 p.m. - 5 p.m.
Registration Begins: 3/1/2022	Registration Ends: 5/15/2022
Cost: \$10 per person	
Ages for Program: All ages	Location: Stone Park (Inside Pioneer Columbus Community Recreation Center in case of weather)



## Yoga in the Park

Des Moines Parks and Recreation invites you to start off your Saturday with free yoga at Gray’s Lake Park. Join us every week from June 4 - September 24 from 9 a.m. to 10 a.m. for free classes led by volunteers from around the metro. These classes are perfect for all skill levels, from curious beginner to advanced yogi. Classes will not be held in the event of rain. .

Start Day	June 5
Saturdays; June 4 through September 24 June 11 and June 18 location TBD	
Program Times:	9 a.m. – 10 a.m.
Registration: No registration, but each participant must complete a one-time/season waiver that will be available on our website or on-site.	
Cost: Free	
Ages for Program: All ages and abilities	Location: Southeast lawn at Gray’s Lake Park

## Free Flicks

Free Flicks is a summer series of outdoor movies in neighborhood parks. The films will be shown on a portable screen and begin after sunset. Admission is free for all. Blankets and lawn chairs are encouraged. Movies will not take place in the event of rain. A decision will be made by 5 p.m. on the day of the movie. Watch our website, Facebook and Twitter for updates.

Start Day	June 10
June 10: Stone Park June 24: Tower Park July 8: Des Moines Art Center/Greenwood Park July 22: Fourmile CRC August 5: Blank Golf Course August 19: Brian Melton Park	
Program Times:	Starts at sundown (approximately 9 p.m.)
Cost: Free	
Ages for Program: All ages	Location: Varies by date See Above



# Bike Back to School

Bike Back to School returns on Aug. 6 at Stone Park (2100 SE 5th St.) and is presented by the Des Moines Street Collective, Des Moines Police Department and Des Moines Parks and Recreation. Bikes will be given away to the first 100 eligible children based on qualifications for free and reduced meals.

Start Day	August 6
Saturday, Aug. 6	
Program Times:	11 a.m. - 1 p.m.
Registration Begins: 8/6/2022	Registration Ends: 8/6/2022
Cost: Free	
Ages for Program: Youth	Location: Stone Park (2100 SE 5th St.)





# Summer Camp

## 2022 Summer Camp

Des Moines Parks and Recreation Summer Camp is uniquely designed to serve children in our community by providing equitable recreation services in City parks. This 10-week program is intended for youth looking to have the day camp experience. Activities will include arts & crafts, sports, field trips, STEM programs, nature-based programs, swim lessons, and more! Lunch and snacks will be provided. Space is limited per site. Online pre-registration required.

Start Day	June 6
Registration is required and begins March	
Program Times:	9 a.m. - 4 p.m.
Cost: Free	
Ages for Program: All ages and abilities	Location: Evelyn K. Davis Park, Drake Park, Weeks Middle School Park, Martin Luther King Jr. Park





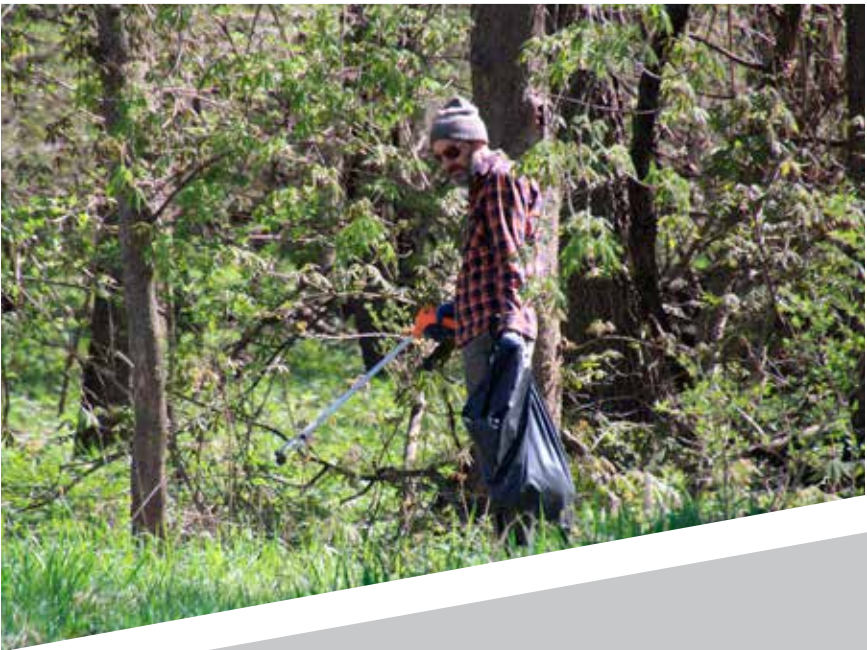
## Cache In Trash Out

Give back, clean up, and find the “cached” prizes during this family fun eco-hunt. City of Des Moines Parks and Recreation, Iowa Geocacher’s Association, Westwood Neighborhood Association, Walnut Creek Watershed Coalition and other concerned citizens invite you on our unique hunt for trash. Help improve our creeks and central Iowa’s water quality! Volunteers will be wading through the creek or walking along the trails collecting litter, tires and looking for the GIANT plastic eggs, with a prize in each! Trash bags, grabbers and gloves will be provided.

Call 248-6399 or text DSMVOLUNTEERS to 84483 to sign-up for weather-related updates.

**Signup Link:** <https://bit.ly/2022CacheInTrashOut>

Start Day	April 16
Saturday, April 16	
Program Times:	9:30 a.m. - 11:30 am
Registration Begins: 2/14/2022	Registration Ends: 4/8/2022
Cost: Free	
Ages for Program: All ages	Location: Walnut Creek



## UPCYCLE

**Who:** UPCYCLE volunteers, in partnership with the City of Des Moines, Blank Park Zoo, Trees Forever, Iowa Natural Heritage Foundation, and Confluence Brewing.

**What/Why:** Help us improve our water quality, diversify our woodlands, and UPCYCLE our invasives into food and fun for Blank Park Zoo's birds, reptiles, primates, and mammals. Volunteers will be provided gloves and tools to cut, remove and treat invasive plants crowding out our woodlands and natives. Volunteers that attend will get a drink ticket to be redeemed following the workday at Confluence Brewing next door!

Gray's Lake Park is a beautiful area, but the beneficial native species in the woodlands are competing with many invasive species such as honeysuckle. These invasive species shade out the native plants and dominate the landscape. We are working hard to open up the woodlands, bring back the natives and increase diversity to create healthier natural areas. There are even added benefits reaching out beyond our woodlands as native species do a better job of holding the soils together and keeping them in place preventing them from running off into our creeks and streams. Although we don't need these invasive species in our woodlands, they'll help fill needs at the Blank Park Zoo where animals can use them for food, play, and practice foraging, flying and other skills.

If you have any questions, please email [parksvolunteer@dmgov.org](mailto:parksvolunteer@dmgov.org). Call 248-6399 or text DSMVOLUNTEERS to 84483 to sign-up for weather-related updates.

**Signup Link:** <https://bit.ly/2022UPCYCLE>

Start Day	June 16
June 16 July 21 and Aug. 18 Rain Date: Sept. 15	
Program Times:	5:30 p.m. - 7:30 p.m.
Registration Begins: 3/1/2022	Registration Ends: 9/9/2022
Cost: Free	
Age is 14+, but participants under 18 need a parent or legal guardian present	Location: Gray's Lake Park

# Adopt-a-Park & Adopt-a-Trail

**What:** Community members, public/private organizations, local businesses, or individuals can join in the cleanup of their favorite park and/or trail segment with the Adopt-a-Park/Trail Program. Adoptees select from an available park or trail segment in the City and agree to host volunteer workdays, once per quarter, for a minimum of one year. The program will focus on litter removal, but adoptees may be utilized for other small projects as needed. After the initial event is held, a sign the with adopter's group or individual name will be posted at the site.



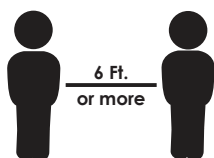
**When:** Year-round

**For more information or to apply, please visit:**

<https://bit.ly/DMPRAadoptaParkTrail> or email [parksvolunteer@dmgov.org](mailto:parksvolunteer@dmgov.org)

Start Day	Jan 1
Year - round	
Program Times:	Park Hours
Registration Begins: 1/1/2022	Registration Ends: 12/31/2022
Cost: Free	
Ages: All ages, minors (under the age of 18) must be supervised by an adult	Location: Various Parks and Trails

## Enjoy Our Program Safely



**Maintain  
Proper Social Distance**



**Wear a Mask  
or  
Face Covering**



**Wash Hands  
Before and After  
Activity**



**Stay Home  
When Experiencing  
Symptoms**

Parks and Recreation is committed to caring for the health and well-being of our community. To reduce the spread of COVID-19, our team has developed protocols, following current public health guidelines, for all our offerings. These are designed to keep you safe and are available online. Additional tools, such as the capacity trackers, allow you to “know before you go” to our pools and community recreation centers.”

**COVID-19  
Protocols**

**City  
COVID-19  
Response**

**Pool  
Capacity  
Tracker**

**Community  
Recreation  
Center  
Capacity  
Tracker**

### **NOTICE:**

In order to comply with emergency proclamations by the Governor or Mayor, as such may be amended from time to time, and as public health guidelines evolve, for the safety of staff and the public, the Parks and Recreation Department reserves the right to cancel Facility Use permits or registrations at any time. In the event of a cancellation, the City's sole liability will be to refund the permit or registration fees. In addition, the Department reserves the right to change the Facility Use permit or registration requirements at any time. The Department will contact applicant, user, or registrants as soon as reasonably possible with such cancellation or changes.

# Seasonal Positions

We need you! Over 300 full and part-time seasonal positions are now available.

## **Lifeguard**

Starting at \$13 hourly  
Minimum age - 15

## **Swim Instructor**

Starting at \$13.50 hourly  
Minimum age - 16

## **Recreation Leader – Wading Pool Attendant**

Starting at \$12 hourly  
Minimum age - 16

## **Seasonal Utility Worker**

Starting at \$13 hourly  
Minimum age - 16

## **Seasonal Recreation**

Specialist II – Wading Pools  
Starting at \$16.17 hourly  
Minimum age - 18

## **Seasonal Recreation Specialist – Gray's Lake**

Starting at \$14 hourly  
Minimum age - 18

## **Seasonal Recreation Specialist – Summer Camp**

Starting at \$14 hourly  
Minimum age - 18

## **Seasonal Recreation Specialist II – Summer Camp**

Starting at \$16.17 hourly  
Minimum age - 18

## **Park and Recreation Associate**

Starting at \$11 hourly  
Minimum age - 18

## **Pool Facility Maintenance - Seasonal Park & Recreation Associate**

Starting at \$13 hourly  
Minimum age - 18

## **Seasonal Cashier – Pools**

Starting at \$12 hourly  
Minimum age - 16

## **Swim Lesson Supervisor**

Starting at \$15 hourly  
Minimum age - 18

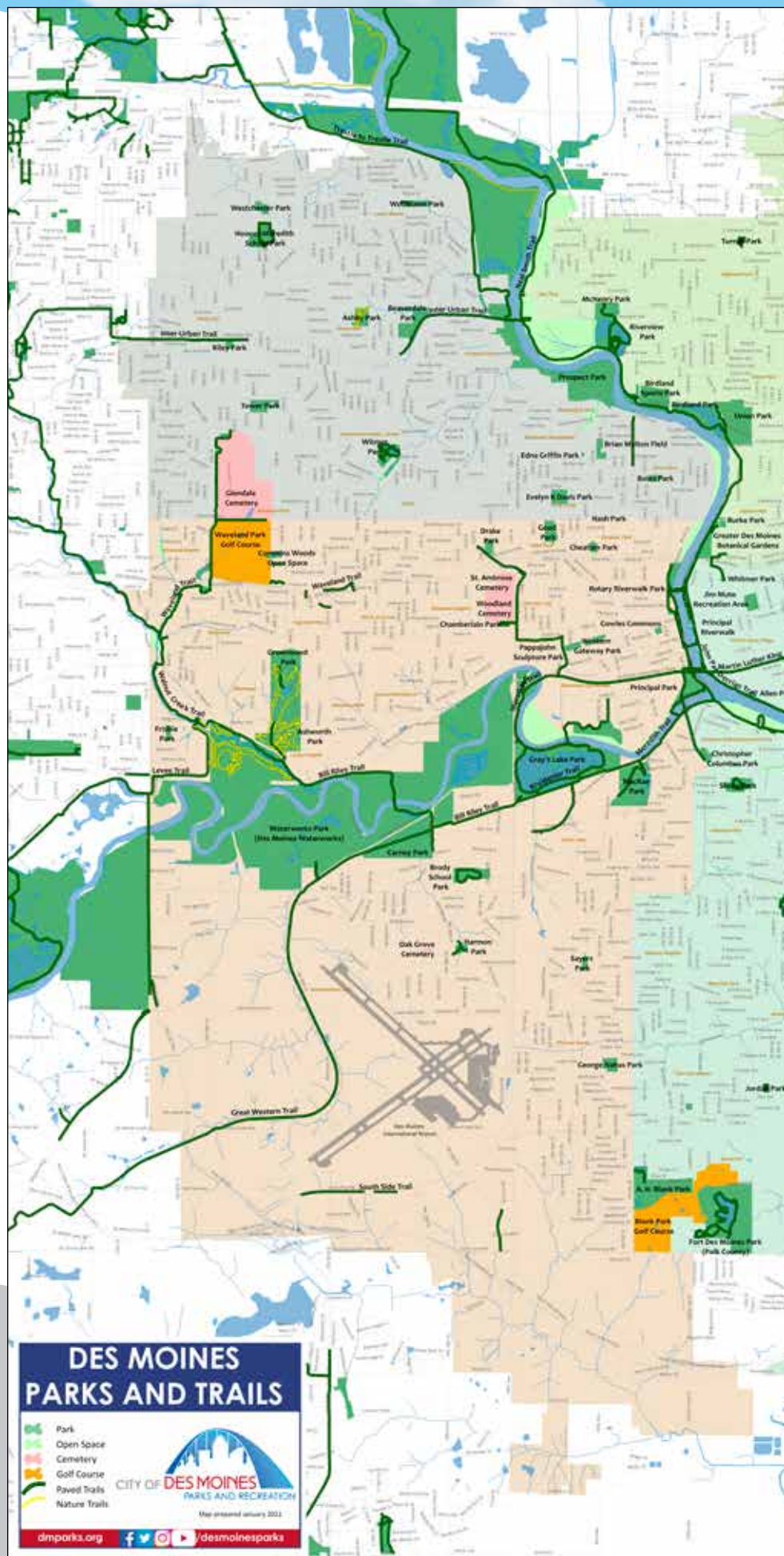
## **Swimming Pool Supervisor**

Starting at \$17 hourly  
Minimum age - 18

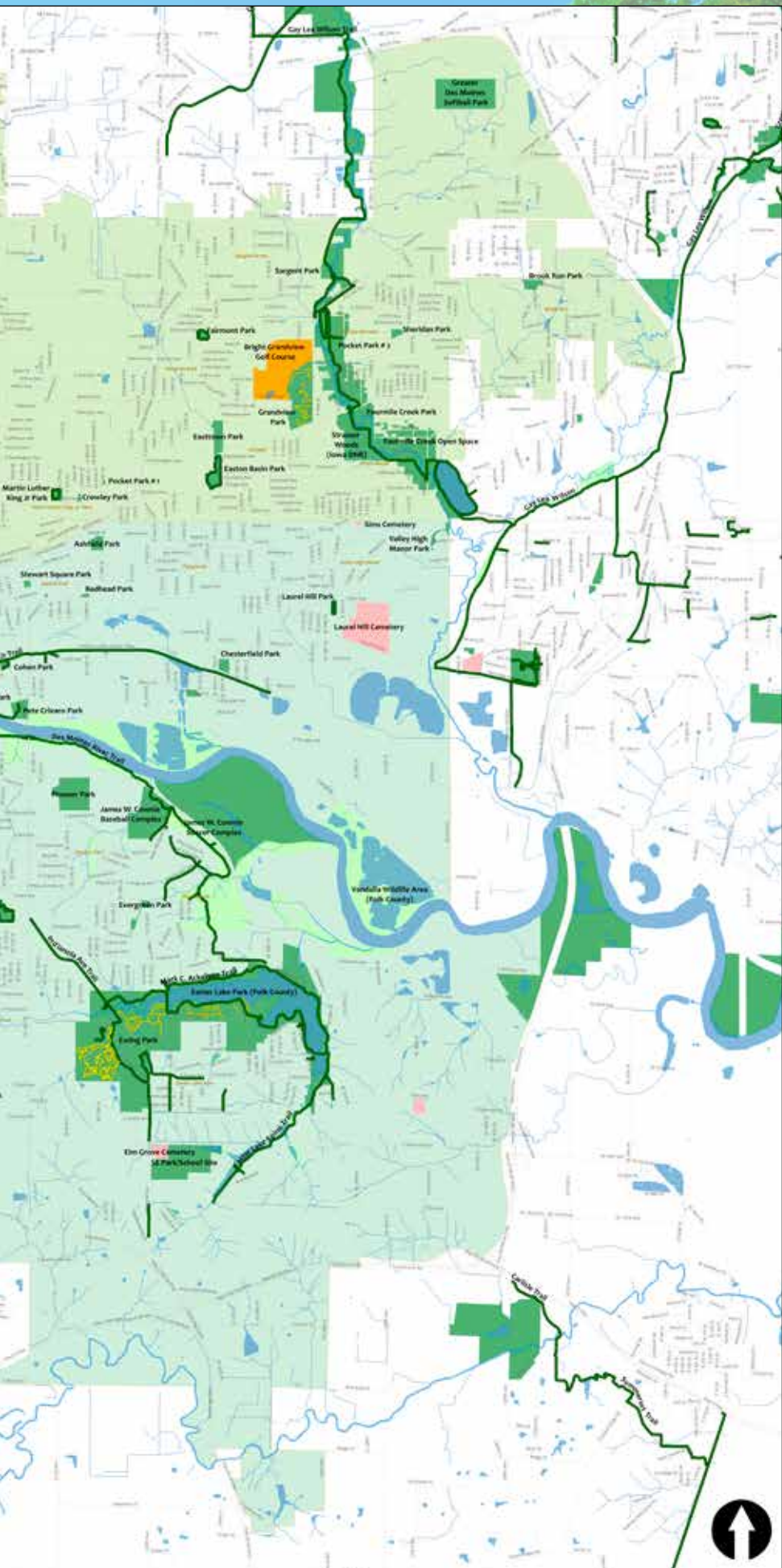


**Appy online at  
[dmparks.org](https://dmparks.org)**











1551 E. Martin Luther King Jr. Parkway  
Des Moines, Iowa 50317  
515-237-1386  
[parks@dmgov.org](mailto:parks@dmgov.org)